

Aesthetic Orthodontics

2020/21

Give your patients the very best aesthetic treatment

T: 0117 975 5533

W: www.tocdental.com



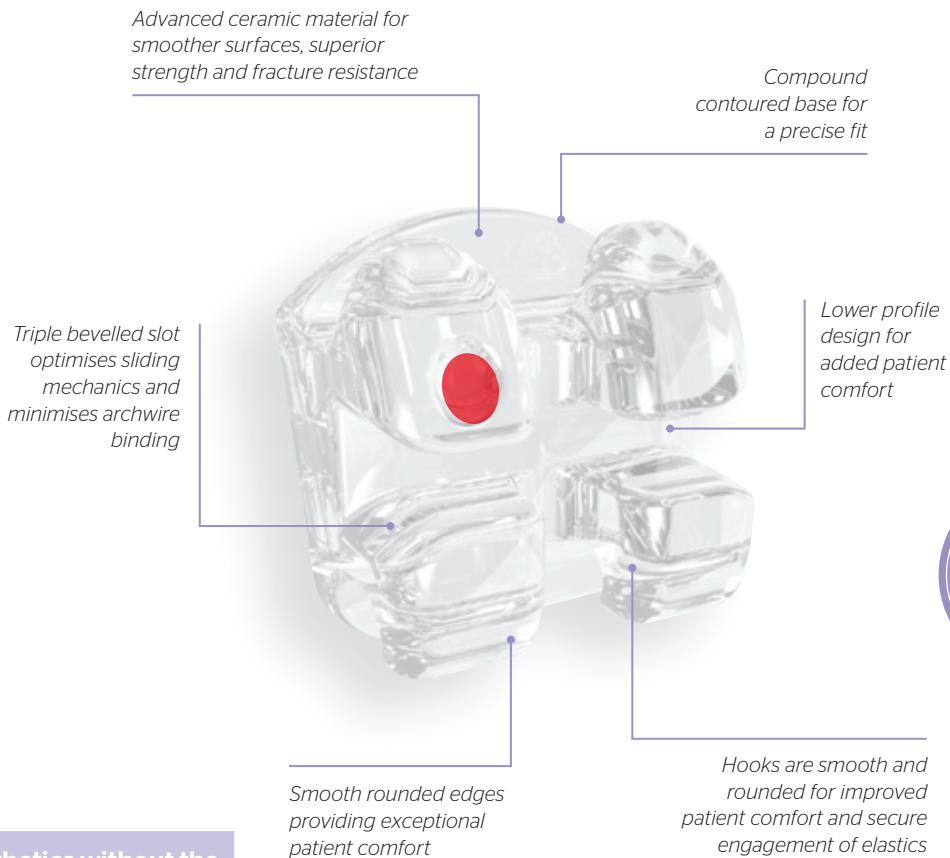
discover the difference

Ghost™

INVISIBLY BRILLIANT

Sapphire aesthetics with polycrystalline strength and durability

Ghost is the very latest advancement in aesthetic brackets brought about by new developments in both materials and manufacturing techniques. This unique product offers extraordinary aesthetics combined with strength and superior performance features that can only be achieved with highly sophisticated ceramic moulding technology. Ghost is as invisible as you can get with a bracket with the natural colour of the tooth penetrating through providing the most brilliant aesthetic appearance in ceramics today.



The Ultimate Option

- Brilliant aesthetics without the glare of conventional sapphire brackets
- Exceptional strength and fracture resistance
- Significantly less friction than other sapphire brackets providing shorter treatment times

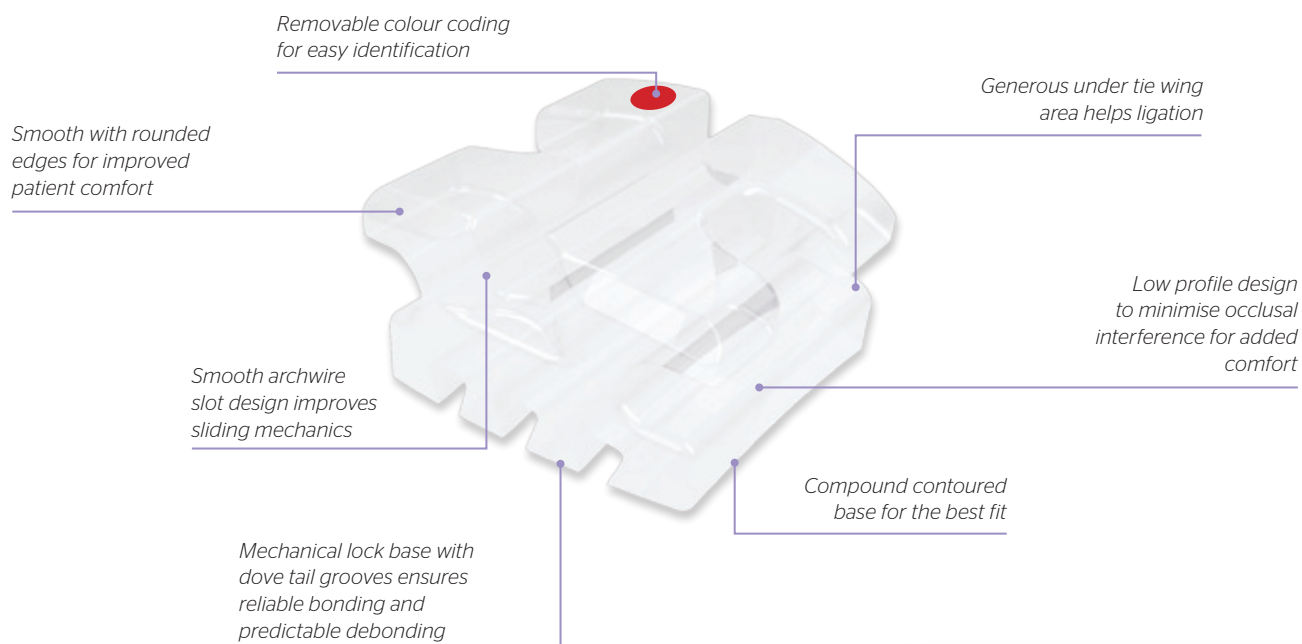
BRACKET KITS	ROTH* .022"	MBT* .022"
Upper 5-5 + Hooks on 3	KITBG-O55-15	KITBG-O55-45
Upper & Lower 5-5 + Hooks on 3	KITBG-O55-10	KITBG-O55-50
Ghost Consultation Model	BG-TYP-00	

*TOC versions of Roth and MBT prescriptions are not implied to be an exact version of any other system, nor do we claim any endorsement of the Doctors



Everything you desire in a ceramic bracket

- Superb aesthetics
- Strength and reliability
- Proven and trusted performance



TREAT YOUR PATIENTS WITH VERVE!

Verve Ceramic are almost invisible as they have the highest translucency blending in naturally with all tooth shades and they are also resistant to staining and discolouration. Verve Ceramic are manufactured from the highest quality polycrystalline alumina providing unmatched strength and durability to minimise bracket fracture. The proven mechanical lock base design ensures optimal bond strength whilst also making debonding predictable and stress free. Clinically proven, Verve Ceramic will deliver exactly what you and your patients are looking for in an aesthetic bracket system.

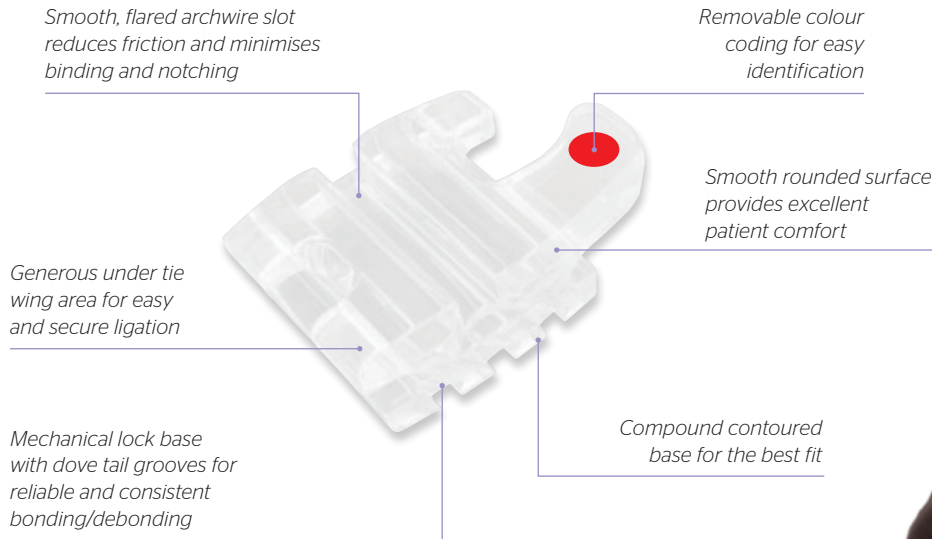
Great Value & High Quality

BRACKET KITS	ROTH* .022"	MBT* .022"
Upper 5-5 + Hooks on 3	KITBV-055-26	KITBV-055-46
Upper & Lower 5-5 No Hooks	KITBV-055-20	KITBV-055-40
Upper & Lower + Hooks on 3	KITBV-055-23	KITBV-055-43
Upper & Lower + Hooks on 3, 4, 5	KITBV-055-25	KIT-BV-055-45
Verve Consultation Model	BV-TYP-00	



Envy is a great alternative to ceramic brackets providing a low cost aesthetic solution for your patients. Highly translucent, Envy blends well with all tooth shades creating a natural appearance and is stain resistant to provide superb aesthetics. Manufactured from the highest quality polyurethane to create a strong bracket resistant to breakage.

First choice for value and reliability



BRACKET KITS	ROTH .022*	MBT .022*
Upper & Lower 5-5 No Hooks	KITBE-055-20	KITBE-055-40
Upper & Lower 5-5 + Hooks on 3	KITBE-055-23	KITBE-055-43
Upper & Lower 5-5 + Hooks on 3, 4, 5	KITBE-055-25	KITBE-055-45
Envy Consultation Model	BE-TYP-00	

Verve™ Bondable Buccal Tubes



Precision, strength and reliability

Verve buccal tubes are designed to offer you the same great benefits as Verve brackets in terms of guaranteed ease of use, treatment efficiency and predictable results.

Verve buccal tubes are precision manufactured for strength and reliability, with a low profile to deliver maximum comfort for your patients.

Rounded ball hook for improved patient comfort

Low profile MIM design

Funnelled entry for easy wire insertion

Indented mesh pad for precise placement

Torque in the base

Permanent code markings for easy identification

Flat buccal surface with special cut out aids handling and positioning
80 gauge mesh contoured base for reliable bonding

Optimum size pad ensures maximum retention



1st Molars	Roth*	MBT*
UR6 .022*	DV-162-00	DV-162-40
UL6 .022*	DV-262-00	DV-262-40
LR6 .022*	DV-362-00	DV-362-40
LL6 .022*	DV-462-00	DV-462-40

2nd Molars	Roth*	MBT*
UR7 .022*	DV-172-00	DV-172-40
UL7 .022*	DV-272-00	DV-272-40
LR7 .022*	DV-372-00	DV-372-40
LL7 .022*	DV-472-00	DV-472-40

Individual Patient Sets UR, UL, LR & LL

Sets of 4	Roth*	MBT*
1st Molars	DV-600-00	DV-600-40
2nd Molars	DV-700-00	DV-700-40

*TOC versions of Roth and MBT prescriptions are not implied to be an exact version of any other system, nor do we claim any endorsement of the Doctors

In-Ovation® C

Ceramic Self-Ligating Bracket



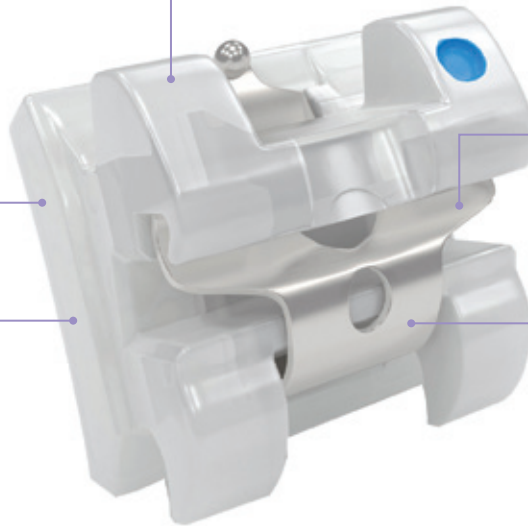
*Smooth swept tie wings
Minimising occlusal interference
and increasing patient comfort*

*Compound contoured base
For a precise anatomical fit*

*100% Mechanical base for
reliable bonding, debonding
and ability to rebond*

*Chamfered archwire slot for
facilitating wire engagement
and reducing binding*

*Unique rhodium coated
Clip for optimal aesthetics*



In-Ovation C is a highly aesthetic self-ligating bracket made from a special ceramic material that compares to the strength and performance of metal. The bracket's exceptionally high translucency and rhodium coated clip provide superb aesthetics with no worry of ligatures discolouring - a marketable advantage that appeals to patients of all ages.

In-Ovation C is a smart way to optimise your practice and expand treatment options. Studies consistently show that self-ligating brackets significantly lower frictional forces, offer faster, easier archwire changes, increase appointment intervals and shorten patient treatment time.

The interactive spring clip secures the archwire and provides optimal control at each phase of treatment. The clip is easy to open and close, saving time over placing ligatures and ensures improved hygiene and appearance.



BRACKET KITS	ROTH® .022"	EURO (MBT)® .022"
Upper 5-5, Lower 3-3	KIT100-532-00	-
Upper 5-5, Lower 3-3, Hooks on 3	KIT100-532-10	KIT100-532-81
Upper 5-5	KIT100-152-00	-
Upper 5-5, Hooks on 3	KIT100-152-10	KIT100-152-81
Upper 5-5, Lower 3-3, Hooks on 3 L4 & 5 (In-Ovation R)	KIT100-652-10	KIT100-652-81
Upper & Lower 5-5, Hooks on 3 (Zirconia L4 & L5)	KIT100-752-10	KIT100-752-81

MTM[®] No Trace[™]

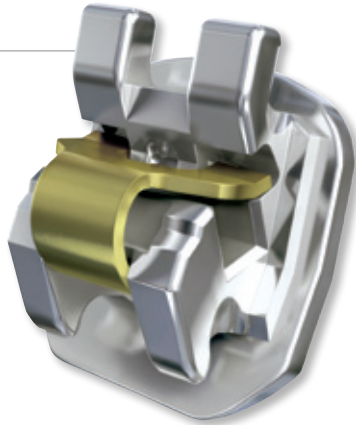
Lingual Self-Ligating Bracket System for Minor Tooth Movement



A great alternative to aligners

Quick Cosmetic Correction

MTM No-Trace System is the all-but-undetectable lingual treatment that works behind the scenes for patients requiring 6mm or less of correction. MTM No-Trace System is designed to treat minor anterior alignment cases in as little as 12-24 weeks. Bonding MTM No-Trace braces is easy and efficient with self-ligating brackets and optional indirect bonding. And because there's no action required by the patient, compliance is nearly effortless. When it comes to minor tooth movement, offer your patients the option of MTM No-Trace System, the low-profile brace without a trace.



CLINICAL INDICATIONS

MTM No-Trace is appropriate for patients with the following:

- Crowding of 6mm or less
- Spacing of 3mm or less/Midline correction of 2mm or less
- Rotations of 25 degrees or less

GET STARTED WITH MTM NO-TRACE

INTRO KIT

- 5 kits MTM No Trace Brackets U/L 4-4
- Bracket Placement Instrument
- Mini Scaler/Clip Opener
- 50 MTM No Trace patient brochures
- 25 Patient DVDs
- 1 MTM No Trace Consultation model
- MTM No Trace poster

Case Study



Pre-treatment



Initial placement



Final treatment time: 18 weeks

INVISIBLE ORTHODONTICS WITH YOU IN CONTROL

FOR YOUR PATIENTS

- Absolutely undetectable
- Small, comfortable to wear
- Fast results in a matter of weeks
- Fewer practice visits
- Begin treatment in under an hour

FOR YOU

- Additional source of revenue
- Fast, easy placement with direct or optional indirect bonding
- Rapid wire engagement with self-ligating brackets
- Virtually eliminates patient compliance issues
- You control the treatment

BRACKET KITS	CODE
Upper & Lower 4-4	KIT90-055-00
Upper & Lower 3-3	KIT90-055-05
Intro Kit (5 kits)	KIT90-055-99
Welcome Kit (10 kits)	KIT90-055-90

ACCESSORIES	CODE
MTM No Trace Patient Leaflets pk 50	120-090-04
MTM No Trace Instructional DVD	120-090-06
MTM No Trace Patient DVD pk 25	120-090-08
MTM No Trace Wall Poster	120-090-07
Consultation Model	TYP90-777-90
Mini Scaler/Clip Opener	GAC890
Tennis Lingual Wire Placer	TENI00LG



Coated Archwires

Tooth coloured durable coating which blends well with all aesthetic brackets. The size shown is the finished size. Tooth tone coating adds .002" to the diameter. Available in Euro and Full Arch shapes.

NICKEL TITANIUM - EURO (Pk 10)		
Size	Upper	Lower
.014"	HQC-014-00	HQC-014-10
.016"	HQC-016-00	HQC-016-10
.018"	HQC-018-00	HQC-018-10
.020"	HQC-020-00	HQC-020-10
.016" x .022"	HQC-622-00	HQC-622-10
.018" x .018"	HQC-818-00	HQC-818-10
.018" x .025"	HQC-825-00	HQC-825-10
.019" x .025"	HQC-925-00	HQC-925-10
.020" x .020"	HQC-220-00	HQC-220-10

NICKEL TITANIUM - FULL (Pk 10)		
Size	Upper	Lower
.014"	HQC-014-01	HQC-014-11
.016"	HQC-016-01	HQC-016-11
.018"	HQC-018-01	HQC-018-11
.020"	HQC-020-01	HQC-020-11
.016" x .022"	HQC-622-01	HQC-622-11
.018" x .018"	HQC-818-01	HQC-818-11
.018" x .025"	HQC-825-01	HQC-825-11
.019" x .025"	HQC-925-01	HQC-925-11
.020" x .020"	HQC-220-01	HQC-220-11

STAINLESS STEEL - EURO (Pk 10)		
Size	Upper	Lower
.014"	HQC-014-50	HQC-014-60
.016"	HQC-016-50	HQC-016-60
.018"	HQC-018-50	HQC-018-60
.020"	HQC-020-50	HQC-020-60
.016" x .022"	HQC-622-50	HQC-622-60
.017" x .025"	HQC-725-50	HQC-725-60
.018" x .018"	HQC-818-50	HQC-818-60
.018" x .025"	HQC-825-50	HQC-825-60
.019" x .025"	HQC-925-50	HQC-925-60

STAINLESS STEEL - FULL (Pk 10)		
Size	Upper	Lower
.014"	HQC-014-51	HQC-014-61
.016"	HQC-016-51	HQC-016-61
.018"	HQC-018-51	HQC-018-61
.020"	HQC-020-51	HQC-020-61
.016" x .022"	HQC-622-51	HQC-622-61
.017" x .025"	HQC-725-51	HQC-725-61
.018" x .018"	HQC-818-51	HQC-818-61
.018" x .025"	HQC-825-51	HQC-825-61
.019" x .025"	HQC-925-51	HQC-925-61

High Aesthetic Archwire



Sentalloy and BioForce high performance wires undergo a unique rhodium process to provide a low reflectivity surface, giving each wire a soft, frosted appearance.



- Reduced visibility
- Complements any aesthetic bracket
- Provides the same outstanding performance as standard Sentalloy and BioForce wires

ACCUFORM - FULL (Pk 10)		
Sentalloy	Upper	Lower
.014"	02-711-112	02-711-612
.016"	02-711-122	02-711-622
.018"	02-711-132	02-711-632
BioForce	Upper	Lower
.018" x .018"	02-728-042	02-728-542
.020" x .020"	02-728-072	02-728-572



Premium Aesthetic Archwires



Tired of coated wires that chip and peel well before the next wire change?

Try our new unique aesthetic wires which offer the highest durability of any aesthetic archwire, free of any plating or coatings.



- Blends well with all aesthetic brackets and tooth shades
- Highly durable, lasting until the next wire change
- Resistant to staining
- Low friction, similar to non-aesthetic wires

NICKEL TITANIUM EURO (Pk 10)		
Size	Upper	Lower
.014"	HQA-014-00	HQA-014-10
.016"	HQA-016-00	HQA-016-10
.018"	HQA-018-00	HQA-018-10
.016" x .022"	HQA-622-00	HQA-622-10
.018" x .025"	HQA-825-00	HQA-825-10
.019" x .025"	HQA-925-00	HQA-925-10
.020" x .020"	HQA-220-00	HQA-220-10

STAINLESS STEEL EURO (Pk 10)		
Size	Upper	Lower
.016"	HQA-016-05	HQA-016-15
.018"	HQA-018-05	HQA-018-15
.018" x .025"	HQA-825-05	HQA-825-15
.019" x .025"	HQA-925-05	HQA-925-15

Coated Ties

- Tooth coloured for great aesthetics
- Durable plastic coating
- Stainless steel

Preformed Shorty Ties

Size (Pk 100)	Code
.010" (.012" coated)	GL-012-61



Preformed Ligature Ties

Size (Pk 100)	Code
.010" (.012" coated)	GL-012-60



Kobayashi Shorty Ties

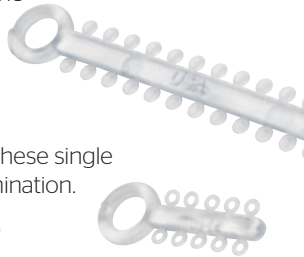
Size (Pk 100)	Code
.012" (.014" coated)	GK-014-60



Mighty Ties™

Holds archwires securely in place.

- Superior elasticity with great recovery
- Excellent colour stability, resistant to fading
- Convenient tabs makes them easy to grip
- High quality medical grade polyurethane
- Latex free minimises allergic reactions
- 1008 ties per pack (24 per stick)



Mighty Ties™ Mini

With all the same features of Mighty Ties™ these single patient ties reduce waste and cross contamination.

- 1000 ties per pk (10 ligatures per stick)



Colour	MightyTies (Pk 1008)	MightyTies Mini (Pk 1000)
□ Clear	EL-120-02	EM-120-02
■ Tooth	EL-120-03	EM-120-03
■ Pearl	EL-120-71	EM-120-71

Mighty Chain™ 15' Spool

Helps close spaces efficiently.

- Superior elasticity with great recovery
- Excellent colour stability, resistant to fading
- High quality medical grade polyurethane
- Latex free minimises allergic reactions



Colour (15' Spool)	Closed	Short	Long
□ Clear	EC-130-02	EC-140-02	EC-150-02
■ Tooth	EC-130-03	EC-140-03	EC-150-03

Elastic Thread

For secure tying in of attachments. Unmatched strength and rebound.



Solid 25' Spool	Code
.025" Clear	34-225-11

Super Chain™

- Provides an optimal and consistent force
- Stays active for longer
- Super thin profile provides the versatility to piggyback with elastomeric ties



Superchain (15' Spool)	Short	Medium	Long
□ Clear	34-012-68	34-013-68	34-011-68

Sili-Ties & Chain™

For reduced staining and improved aesthetics with clear brackets.

- Injected with a silicone additive that is time-released during the life of the product while in the mouth
- Slick surface makes it easy to place on ceramic brackets and provides reduced friction with wires during treatment - will not wear off due to abrasion, like other coated ties
- Retains clarity for longer



Sili-Ties (45 sticks of 22 ties)	.120"
□ Clear	59-950-00
■ Pearlescent	59-950-55

Sili-Chain (15' Spool)	Short	Medium	Long
□ Clear	59-851-00	59-852-00	59-853-00
■ Pearlescent	59-851-55	59-852-55	59-853-55

TOC Intra-Oral Elastics

TOC's Flower Elastics are manufactured from the finest surgical grade natural latex and latex free rubber to ensure reliable force delivery.

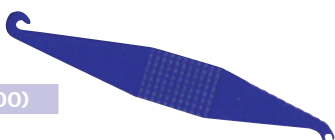
- Fresh and uncontaminated due to air-tight seal
- Patient bag includes 100 lightly powdered elastics for easy use with no residue
- Packs of 20 patient packs, each containing 100 elastics



Product (Pk 20)	Colour	Force	Size	Latex	Latex-free
■ Daffodil	Yellow	2oz	5/16"	E20-516	-
■ Rose	Red	3.5oz	3/16"	E35-316	E35-316LF
■ Iris	Blue	3.5oz	1/4"	E35-14	E35-14LF
■ Mint	Green	3.5oz	5/16"	E35-516	-
■ Fuschia	Pink	3.5oz	3/8"	E35-38	-
■ Marigold	Orange	4.5oz	1/4"	E45-14	E45-14LF
■ Thistle	Grey	4.5oz	3/16"	E45-316	-
■ Honeysuckle	Tan	4.5oz	5/16"	E45-516	-
■ Heather	Mauve	6oz	5/16"	E60-516	-

Elastic Directors

- Helps your patients place and remove elastics more easily.
- Multi-coloured pack.



Product (pk 100)
EP-100-00

NeoBond™ Light Cure Adhesive

- Bonds both chemically and mechanically for a superior bond, while flowing into the tightest mesh without bracket drift
- Fluoride releasing and recharging
- Works well with LED as well as traditional curing lights
- Convenience of a light cure, plus a paste that has the bonding characteristics and viscosity that are best for today's mesh bases



**TOP
SELLER!**

Full Syringe kit includes: 2 x 4gm Paste Syringe, 5ml Etch Syringe, 6ml Primer, 25 Mini Mixing Sticks, 25 Gel Etching Tips, 50 Mixing Brushes & Mixing Well

Product	Code
NeoBond Full Syringe Kit	52-800-00
NeoBond Trial Kit	52-800-01
4gm Paste Syringe	52-800-10

TruGRIP® Light Cure Bracket Adhesive

Tru-Grip gives you state-of-the-art technology so you have versatility, ease of handling, aesthetics and reliability at your finger tips. With the ability to bond ceramic, composite and metal brackets and with no bracket drift because of the ideal viscosity, Tru-Grip LC has everything you need in an adhesive. It offers a simple and comfortable application procedure combined with extremely reliable bond strength. Tru-Grip LC provides extended working time to ensure accurate bracket placement and is also a great choice for lingual bonding.

- No mixing required
- Light cure in only 30 seconds
- Ideal viscosity
- Precise placement
- Reliable bond strength



Kit Includes: 15ml Liquid Etch, 7gm Primer, 4 x 5gm Paste Syringes, Spatulas, Mixing Pads, Brush Holder, Brushes

PRODUCT	CODE
Light Cure Bracket Adhesive Kit	TG-100-00
Light Cure Bracket Adhesive Trial Kit	TG-100-10
Light Cure Syringe Bracket Adhesive Paste, 5gm	TG-100-20
Light Cure Adhesive Primer, 7gm	TG-100-30

**Great
Value for
Money!**

Extraoral Cheek Retractors

- One piece design
- Autoclavable



PRODUCT (pk 1)	CODE
Child	LC-100-01
Adult	LC-100-02

Disposable Cheek Retractors

- One piece design
- Cold sterilisable



PRODUCT (pk 2)	CODE
Child	LC-300-20
Teen	LC-300-21
Adult	LC-300-22

Cheek Retractor

The longer extension tabs allow the cheeks to be pulled back further providing maximum access for easier photography.

**See
more
on our
website**



CODE
TOCCR-00-01

Autoclavable up to 230°F/110°C

Replicate™

Chromatic alginate for high precision impressions

- Designed for orthodontics and high precision dentistry
- High accuracy to 20 microns for finer detail
- Colour changing - purple for mixing, pink to load the impression tray and yellow for insertion into the mouth
- Extra fast setting time in the mouth - with a minimum of only 30 seconds
- High elasticity and resistance to tear
- High dimensional stability - over 100 hrs
- Easy to mix and dust free

Get it right every time!

Mint Flavoured



PRODUCT	CODE
Bag - 450g	RR-450-00
Starter Kit (2x450g, measures, container)	RR-450-10

Impression Trays

For perfect impressions first time

- Excellent rigidity with no distortion when seating or removing a tray
- Superior alginate retention for a clean complete impression
- No tray adhesive required
- Full range of sizes to ensure the right fit

MOST POPULAR

SIZE (Pk 50)	UPPER	LOWER
1 - Red	RT-100-01	RT-000-01
2 - Orange	RT-100-02	RT-000-02
3 - Blue	RT-100-03	RT-000-03
4 - Green	RT-100-04	RT-000-04
5 - Yellow	RT-100-05	RT-000-05
6 - Purple	RT-100-06	RT-000-06
Mixed Bag (Pk 40 - sizes 2-5)	RT-600-00	

Slots with inner support tags retain alginate securely

Long, non-slip handle for a firm grip

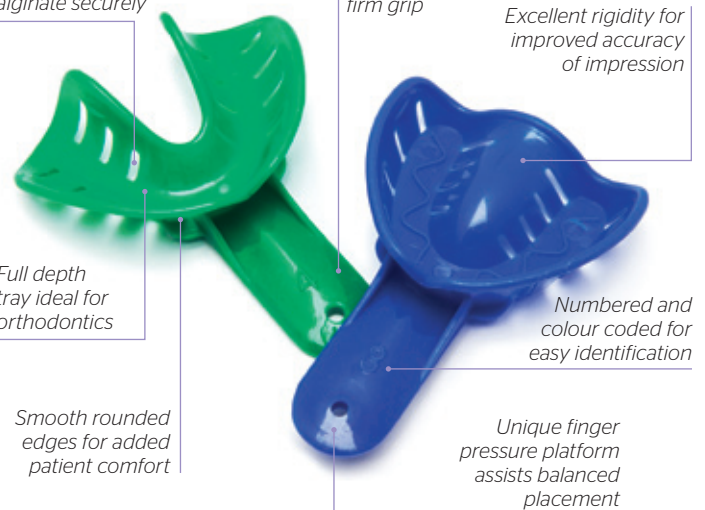
Excellent rigidity for improved accuracy of impression

Full depth tray ideal for orthodontics

Numbered and colour coded for easy identification

Smooth rounded edges for added patient comfort

Unique finger pressure platform assists balanced placement



Ultrabright Glass Mirrors

These new generation dental mirrors feature a ground breaking ultrabright coating which for the first time achieves close to 100% reflectivity. The Ultrabright mirror comes with a removable silicone handle for comfortable handling which can be autoclaved together with the mirror.

Why Ultrabright mirrors?

- Reflectivity close to 100%
- More detail for intra-oral images
- High durability for repetitive autoclaving
- Removable silicone handles

For the best results

PRODUCT	CODE
Child Occlusal, width 55mm	TOC-UBGM11
Adult Occlusal, width 65mm	TOC-UBGM12
Adult Occlusal, width 70mm	TOC-UBGM13



Rhodium Coated Glass Mirrors

- High quality for great results
- Superior reflectivity to chrome and metal
- Double-sided
- Incredibly smooth edges
- Autoclavable



PRODUCT	CODE
Buccal Narrow	QM-800-01
Buccal Wide	QM-800-02
Lingual Narrow	QM-800-03
Lingual Wide	QM-800-04
Palatal Adult	QM-800-05
Palatal Child	QM-800-06
Palatal Adult X-Long	QM-800-07

Swingle Ortho Professional Kit

Safe and precise interproximal stripping

- Efficient opening of contact points
- Rapid controlled interproximal reduction, step by step
- Contouring, finishing and polishing



PRODUCT	CODE
Swingle - without light	IS-100-00
Swingle - with light	IS-100-01

Kit Includes:

Contra Angle Handpiece Head
File Ejector, Spray Canal Cleaning Needle
6 Ortho Strips (08µ, 80µ, 60µ, 40µ, 25µ, 15µ)

Double Sided Ortho-Strips

- Flexible strips, diamond coated on both sides
- Proximal contouring, finishing and polishing of both adjacent teeth in a single procedure
- No injuries to patient lips or dentist fingers
- Available singly or in a set
- Fully autoclavable strips



STRIPS	CODE
Double Sided Set A (OS90/OS40/OS25/OS15)	97-990-12
Double Sided Set B (OS60/OS40/OS25/OS15)	97-990-11
Single Strips (15, 25, 40, 60, 90 micron)	Various

HandyStripper Kit

Compact Interproximal Stripping System

Specially designed for breaking contact points in tight interproximal spaces, the small HandyStripper delivers control and stability at your finger tips. Made of high grade autoclavable stainless steel with easy-to-replace diamond strips. Compact size so safer to use and variety of sizes makes it ideal for every interproximal stripping need.

Kit includes: HandyStripper handle, 5 x Micro Saw 4mm, 10 x Single Sided 4mm Strips, 10 x Double Sided 4mm Strips

CODE
IS-300-01



Spacefile Interproximal Reduction System

- Safe and efficient stripping
- Ultra thin and flexible diamond coated strips for easy contouring
- Colour coded for easy identification

Kit includes: W&H Handpiece, Orthofile System (7 double sided blades), Set of Measuring Gauges



Code
KIT04-500-10

Diamond Discs

- Flexible for ease of use
- Disc diameter 19mm and 22mm
- For use with low speed handpieces
- Includes 2 diamond discs and 1 mandrel

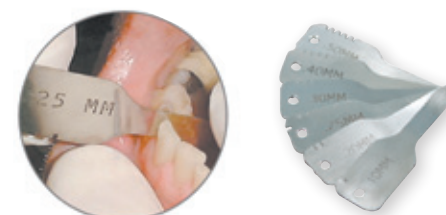


PRODUCT (Pk 2)	CODE
A. Double Sided Diamond Disc 19mm (0.17mm thick)	88617
A. Double Sided Diamond Disc 22mm (0.17mm thick)	88613
B. Double Sided See-Through Diamond Disc 22mm (0.20mm thick)	88655
C. Double Sided Mesh Diamond Disc 19mm (0.20mm thick)	88657
C. Double Sided Mesh Diamond Disc 22mm (0.20mm thick)	88656
D. Single Sided Diamond Disc 19mm (0.10mm thick)	88616
D. Single Sided Diamond Disc 22mm (0.10mm thick)	88614

Incremental Thickness Gauge

- Pack of six stainless steel gauges for measuring interproximal spaces.

Dimensions are 0.1mm, 0.2mm, 0.25mm, 0.3mm, 0.4mm, 0.5mm.



Heat sterilisable up to 340°F/170°C
Autoclavable up to 250°F/121°C

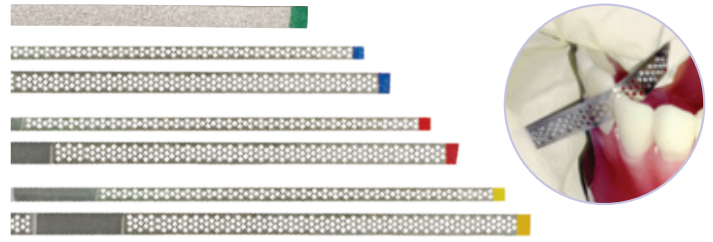
PRODUCT	CODE
Measuring Gauges (pk 6)	IG-105-06



Interproximal Diamond Strips

Perforated and flexible

- Perfect for interproximal reduction, recontouring and finishing contact points
- Single sided
- Autoclavable
- 2 widths: Narrow (2.5mm) and Wide (3.75mm)
- 4 grades: coarse (90 micron), medium (45 micron), fine (30 micron), extra-fine (15 micron)



Interproximal Strip (Pk 10)	Narrow	Wide
Extra Fine (Yellow)	IS-600-03	IS-500-03
Fine (Red)	IS-600-02	IS-500-02
Medium (Blue)	IS-600-01	IS-500-01
Coarse (Green)	-	IS-700-01
Interproximal Strip Kit (Pk 15)	Code	
Narrow kit (includes 5x Extra Fine, 5x Fine, 5x Medium)	IS-600-00	
Wide kit (includes 5x Extra Fine, 5x Fine, 5x Medium)	IS-500-00	

Freddy™ Ceramic Buttons & Hooks

The Freddy ceramic button is the perfect clear utility button for all aesthetic appliances.

The Freddy hook has a smooth low profile and ellipse shape. It has the same characteristics as the Freddy button and matches perfectly with Invisalign™ and other aligner systems.

- For labial and lingual use
- Mesh base creates a strong bond
- Bonds well with most common adhesives
- Anatomy and size of base fits all teeth
- Enough space around tie wing for all elastics
- Maintains the clear look for aligners as anchorage for elastics



PRODUCT (PK 10)	CODE
Bondable Ceramic Button	JB-334-00
Bondable Ceramic Hook	JB-335-00

Bondable Composite Buttons

- Aesthetic and stain resistant
- Contoured mechanical base for optimal bonding
- Ideal for use with aligners

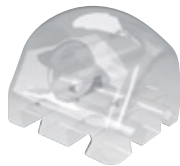


CODE (Pk 10)

JB-234-00

Bondable Composite Eyelets

- Aesthetic and stain resistant
- Contoured mechanical base for optimal bonding
- Funnelled entry for easy wire insertion



CODE (Pk 10)

JB-235-00

Bondable Eyelets

- One piece
- Rectangular curved base



CODE (Pk 10)

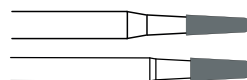
JE-035-00



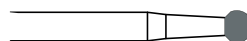
Tungsten Carbide Debonding Burs

Quantum™ burs are designed, manufactured and finished for optimum strength, performance and durability offering efficient debonding and adhesive removal. They are brazed at the base of the neck as opposed to the base of the head as found in many competitor products. The stainless steel shanks allows for multiple autoclave cycles without the risk of corrosion and the convenient blister packaging keeps burs safe and well protected until needed.

Exceeds all ISO, FDA, BSI and CE European standards.



8 Flute	Right Angled	Friction Grip
.012"	TOC1171RA	TOC1171FG
.016"	TOC1172RA	TOC1172FG



12 Flute	Right Angled	Friction Grip
.018"	TOC7006RA	TOC7006FG



Ortho FlexTech™ Retainer Wire Gold Chain

Save on chairtime and lab fees with Ortho FlexTech 14 karat gold chain retainer. Clinically proven, Ortho FlexTech naturally forms to the lingual arch curvature making it easy to fit in the chair. The chain lays flat against the teeth offering improved patient comfort and lasting aesthetics due to its 14 karat gold composition. Etched version available for improved adhesion.



- Stabilises orthodontic corrections
- Prevents rotational relapses
- Low failure rate due to "flex linkage"

PRODUCT	CODE
30" Spool	TOC-OFT
Spool & FlowTain	TOC-OFTKIT
Etched 30" Spool	TOC-OFT-E
Etched Spool & FlowTain	TOC-OFT-EKIT

Stainless Steel Chain

An economical version of the gold chain with the same great patented design and ease of use. It offers the added benefits of a 30% increase in tensile strength and 300% increase in torsional strength.



PRODUCT	CODE
30" Spool	TOC-OFTSS
Spool & FlowTain	TOC-OFTSSKIT

Multi-Stranded Retainer Wire

Flattened Multi-Strand Wire in convenient 6" lengths. This is bonded to the lingual surface of the teeth as a permanent fixed retainer once orthodontic treatment has finished.

- No compliance issues
- Long term stability
- Improved patient comfort



Product (pk 10)	Code
6" lengths	FF-000-06

FlowTain™ Light Cure Flowable Composite

FlowTain's low viscosity makes it ideal for bonding lingual retainers, such as Ortho FlexTech and Multi-Stranded Retainer Wire. It is very smooth when cured which will reduce wear and enhance patient comfort.



PRODUCT	CODE
1.5gm syringe & 10 tips	TOC-FT

Easy Vac

Vacuum forming machine

Make your own whitening trays, retainers and gumshields with this quick and easy to use, stylish 'suck-down' machine.



- Compact size
- Easy to clean
- Safe and convenient controls
- Uses square material

CODE

TOCEV2

Other machines available - call for details

Pure Plastics™



Opal™

Durable Retainer Material

Provides durability and strength making it the first choice for retainers.

- Natural looking
- Tough - ideal for retainers
- May also be used for tooth moving appliances
- Abrasion resistant - ideal for patients who brux



PRODUCT (Pk 100)	CODE
.040" Circle 120mm	O-40-120C
.040" Circle 125mm	O-40-125C
.040" Square 5"	O-40-127S

Diamond™

Whitening Tray Material

Why not offer whitening to your patients after treatment.

- Easy to work with
- Exceptional performance



PRODUCT (Pk 25)	CODE
.040" Circle	D-40-125R
.040" Square	D-40-127S
.060" Square	D-60-133S
.060" Circle	D-60-120R
.060" Circle	D-60-125R

Offering great value for money, the Essentials range of pliers, cutters and hand instruments are manufactured from high quality stainless steel and are resistant to corrosion. More styles available than shown.



Weingart Plier

General utility plier with serrated tips to hold archwires firmly in the mouth. Angled for ease of working and good access.

CODE
TOC-E0377



Pin and Ligature Cutter

A standard pin cutter with tips that have an ideal length of 12mm. Cuts .012" to .016".

CODE
TOC-E0330



Distal End Cutter

Safety hold cutters with immunity steel tips that will not discolour or rust. Cuts .018" x .025" and .022" hard wires.

CODE
TOC-E0319



Step Forming Plier

Make right or left, step up or step down bends in one simple action. Can be used intra-orally so no need to remove the archwire. The 3 sizes allow you to apply the precise amount of bend required. Also able to intrude or extrude a tooth/teeth and change inclination or rotation.

SIZE	CODE	SIZE	CODE	SIZE	CODE
1 mm	TOC-E0710	0.75 mm	TOC-E0711	0.5 mm	TOC-E0712



Straight Bracket Remover

Sharp tips wedge between the edge of the bracket base and tooth surface lifting off the bracket with no discomfort to the patient. The removers grip firmly for easy horizontal or vertical use.

CODE
TOC-E0381



Cinch Back Plier

Cinches and bends NiTi archwires distal to the buccal tube. Slim beak allows preciseworking.

CODE
TOC-E0802



Bonding Tweezer - Fine Tips

Extra fine tips for extra visibility. With slot aligner on the opposite end.

CODE
TOC-E0452



Keat Reverse Action Tweezer

For easy and accurate positioning of buccal tubes. Reverse action will not release tube until required.

CODE
TOC-E0455



Height Gauge

High Heat Gauge that measures height of bracket placement from incisal edge. 3.5, 4.0, 4.5 & 5.0mm. Withstands heat up to 350°F/177°C

CODE
SH-022-00



Tervis Mathieu Needle Holder

Made from high quality stainless steel with fine serrations for placing metal or elastic ties.

PRODUCT	CODE
Mathieu Narrow Tip	TEN235



Mosquito

Economical mosquitos with a straight tip and a length of 12.5cm. Grooved tip for easy placement of elastic ligatures.

CODE
TOC-E0140



Ligature Director

Double ended lightweight ligature director with textured grip for easy handling.

CODE
TOC-E0478



4-Tufted Brush

Ideal for cleaning around wires and brackets, this small tufted shaped brush allows easier access than a normal brush head in hard to reach areas.



PRODUCT (Pk 12)	CODE
4-Tufted Brushes	TOC-4TUFT

Ortho ReadyBrush™

A must have in any practice. Ready brushes come impregnated with mint toothpaste and are ready for use, just add water. Encourage your patients to brush before their appointment by offering them a Ready Brush. The V-Trim brush is designed specifically for ortho treatment to avoid interference with the appliance.



PRODUCT (Pk 30)	CODE
Ortho ReadyBrush	TOC-ORB

Ortho Hygiene Kit

A real quality hygiene kit to help promote good oral hygiene for those patients with fixed appliances. These sturdy, attractive Ortho Hygiene Kits are ideal for storage and travelling and are suitable for both teenagers and adults.

FREE Imprinting on orders of 144



PRODUCT	CODE
Pink	TOC-OKPK
Green	TOC-OKG
Blue	TOC-OKB
Purple	TOC-OKP

Includes:

- V-Trim
- Toothbrush
- Travel Brush
- End Tuft Brush
- Mirror

- Toothpaste
- Interdental Brush
- Wax
- Timer

Comfort Cover

Comfort Cover shields the patient's lips and cheeks from the discomfort often associated with orthodontic treatment or activities where the risk of oral laceration could occur such as playing musical instruments.

- Packaged for professional presentation to your patients
- Great for carrying in book bags, handbags or gym bags
- Latex free

PRODUCT (Pk 5)	CODE
Patient Set	98165



Patient Relief Wax

Plain wax in scented and coloured cases. Provides instant relief for your patients from the irritation of their fixed appliance

Product (pk 50)	Code
Grape	PW-001-50
Orange	PW-002-50
Cherry	PW-003-50
Cinnamon	PW-004-50
Mint	PW-005-50
Bubble Gum	PW-007-50
Pineapple	PW-008-50
Blueberry	PW-009-50
Cotton Candy	PW-013-50
Silver (Unscented)	PW-010-50



SHOCK DOCTOR™ NO. 1 MOUTHGUARD IN THE WORLD



Double Braces



Single Braces

Braces

- 100% Medical Grade Silicone for ultimate comfort and compatibility with braces
- Fits around brackets and adapts to changes in tooth position when braces are adjusted
- Pop in and play - no moulding required

TOP SELLER

PRODUCT	CODE
Single Braces - Blue	TOC-EZ4100
Single Braces - Pink	TOC-EZ4200
Double Braces - Blue	TOC-EZ4300
Double Braces - Pink	TOC-EZ4400

Effer-ves®

Appliance Cleaning Tablets

Effer-ves is an effective, effervescent tablet for cleaning retainers, aligners and mouthguards. Specially formulated to kill bacteria that can build up on all dental appliances, Effer-ves helps to ensure optimal oral health as well as removing stains caused by tea, coffee and tobacco, leaving the appliance and mouth feeling fresh and clean.



- Suitable for Clear Retainers, Wire Retainers, Clear Aligners, Mouthguards, TMJ Appliances, Bruxing Appliances and Nightguards.
- Easy to use
- Safe to use on acrylic and wire combinations within orthodontic appliances

PRODUCT	CODE
Patient Box (Pk 32)	TOC-ACT

Value Appliance Cases

Slim design ideal for aligners, whitening trays and retainers.



- Strong & compact
- 1" Depth
- Positive lock
- Hinged lid
- Vented
- Economical

PRODUCT (Pk 12)	CODE
Pink	TOC-RCPK
Blue	TOC-RCB
Coral	TOC-RCC
Green	TOC-RCG
Yellow	TOC-RCY
Orange	TOC-RCO
Purple	TOC-RCP
Red	TOC-RCR
White	TOC-RCW
Assorted	TOC-RCA
Assorted Sparkle	TOC-RCS



Retainer Cases

Strong, high-impact plastic in your choice of classic, glow in the dark and sparkle finishes with write-on I.D. area.

- Appliance key holder style
- Durable long life hinge
- Vented holes prevent odours
- 1¼" depth fits most appliances



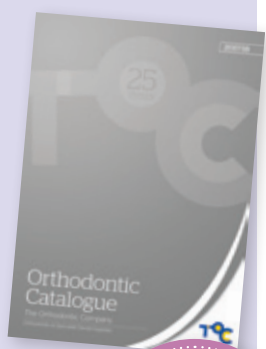
PRODUCT (pk 25)	CODE
Blue	350-000
Red	350-001
Pink	350-002
Orange	350-003
Yellow	350-004
Green	350-005
Black	350-006
Clear	350-007
Aqua	350-008
Purple	350-009
Assorted	350-010
Assorted Glow	350-020
Assorted Sparkle	350-030

Discover The Difference

Established for over 25 years, TOC has grown into a leading supplier of orthodontic products to hospitals, specialist orthodontic and general dental practices throughout the UK and Ireland.

We hold extensive stocks in our UK Distribution Centre in Bristol ready for next day delivery, and pride ourselves on offering the most comprehensive range of orthodontic products in the UK. Our aim is to be your supplier of choice for all your orthodontic needs.

With one of the largest independent sales teams in the UK dedicated to orthodontics we are able to work closely with you to help understand your needs and assist in product choice. If you would like your local TOC Business Development Executive to arrange a visit please call our Customer Services on **0117 975 5533**.



Are you offering Aligners in your practice?

If so call us to request a copy of our new Aligner Accessories brochure. Includes everything you and your patients need to ensure your aligners are a success.

