

TruPix™

Picture. Perfect. Every. Time.



Retractors



Mirrors



Contrastors



discover the difference

STAINLESS STEEL RETRACTORS

**NOW AVAILABLE
IN BLACK!**

Double Ended Photo
Cheek Retractor



CODE (Pk 2)

LR-300-02

C-Shape Photo Cheek Retractor



CODE (Pk 2)

LR-300-03

V-Shape Photo Cheek Retractor



CODE (Pk 2)

LR-300-00

Photo Lip Retractor



CODE

LR-300-01



**DON'T
FORGET!
Metal
recycles
forever!**

- Excellent for photography
- Smooth finish
- Black Titanium colour coated - 100% biocompatible, non-toxic and non-hazardous
- Double ended - small and large on either end
- Autoclavable up to 137°C

As well as providing a highly aesthetic clinical shot, our black stainless steel retractor range is eco-friendly too! In a world that's moving away from plastic, why not do your bit and retract in a plastic free environment. Fully autoclavable, these retractors won't turn yellow or snap after multiple uses.

Don't just take our word for it, hear what some of our clinicians have to say!

"Just tried these retractors from TOC! I have definitely seen an improvement in my photographs after using them. I particularly like the contrast between the dark retractors and the gums/teeth. My patients also find them really comfortable. I would definitely recommend trying them out."

Miss Semina Visram, Consultant Orthodontist



Scan for prices

"I really like using the black retractors. Being made of steel, they are more rigid than plastic alternatives and provide consistent retraction every time. The larger C-shaped end is great for vertical retraction when taking the frontal intra-oral photographs. When comparing this against narrow retractors, it's possible to photograph the full height of the gingival tissues and buccal sulcus. The narrower V-shaped ends are great for the buccal photographs and are better for when you need good lateral retraction. The black colour also contrasts really well against the teeth and soft tissues."

Dr Hesham Ali, Consultant Orthodontist

Use me for your
frontal shots

Use me for your
buccal shots and I'll
retract right back to
the molars!



I come in
brushed
steel too!

Brushed stainless steel retractors with a satin finish to reduce glare



V-Shape Photo Cheek Retractor

- High quality stainless steel
- Double ended, small and large

CODE (Pk 2)

LR-200-00



Double Ended Photo Cheek Retractor

- Double ended with a different size on each end for adult and child
- Longer lasting compared to plastic retractors

CODE (Pk 2)

LR-159-00



Photo Lip Retractor

- High quality stainless steel
- Great anatomical fit
- Excellent for occlusal photographs



CODE

LR-200-01



PLASTIC RETRACTORS

Double Ended Cheek Retractors



- Sturdy plastic will not crack
- Double ended for adult and child sizes
- Smooth with rounded edges for patient comfort

CODE (Pk 2)

LR-155-00

Long Handled Photo Cheek Retractors



- Strong, clear plastic
- Comfortable with smooth edges
- Adult and child sizes

PRODUCT (Pk 2)	CODE
Small	QC-300-01
Large	QC-300-02

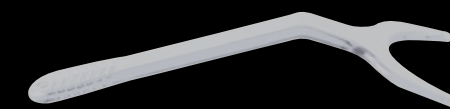
Photo Cheek Retractor



- Smooth comfortable edges
- Double-ended with a different size on each end for adult and child
- Autoclavable to 135°

PRODUCT (Pk 2)	CODE
Small	QC-500-01
Large	QC-500-02

Photo Lip Retractor



- Allows unrestricted access
- Perfect for occlusal photographs and quick direct bond repair
- Extremely comfortable for patients
- Angled head retracts lips
- One size fits most

CODE (Pk 2)

QL-500-01



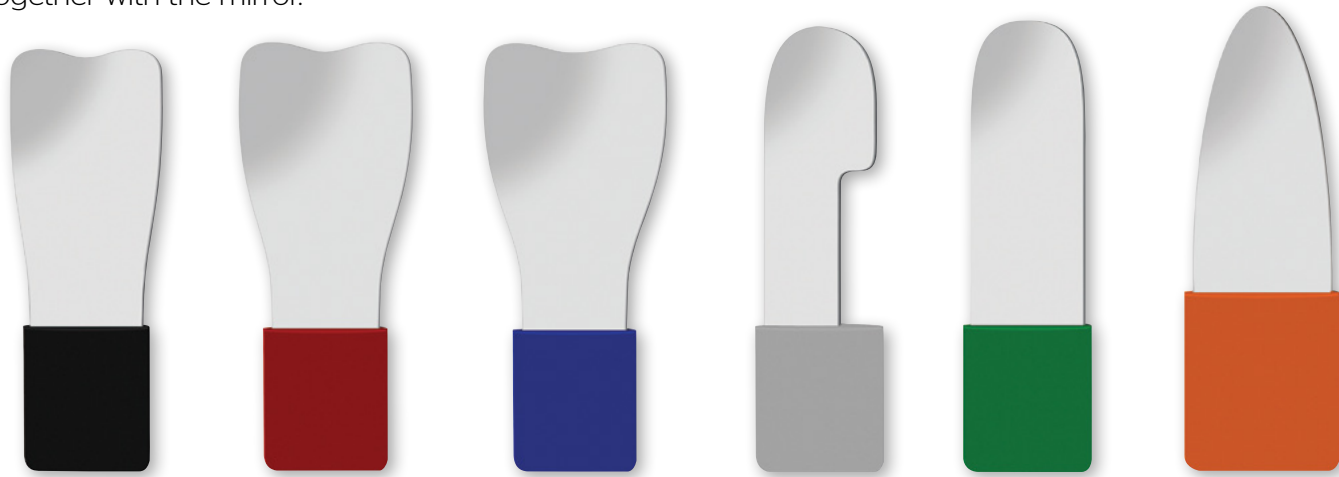
Scan for prices

INTRA-ORAL MIRRORS

Ultrabright Glass Mirrors

These new generation dental mirrors are made from extremely smooth float glass and feature a ground breaking ultrabright coating, which for the first time achieves close to 100% reflectivity and 100% colour fidelity.

The Ultrabright mirrors are single sided, 3mm thick with rounded edges and come with a removable silicone handle for comfortable handling which can be autoclaved together with the mirror.



TOC-UBGM11

TOC-UBGM12

TOC-UBGM13

TOC-UBGM14

TOC-UBGM15

TOC-UBGM16

Autoclavable up to 278°F/137°C

PRODUCT	CODE
Child Occlusal, width 55mm, Black	TOC-UBGM11
Adult Occlusal, width 65mm, Red	TOC-UBGM12
Adult Occlusal, width 70mm, Blue	TOC-UBGM13
Adult Lingual, width 40mm, Grey	TOC-UBGM14
Adult Buccal, width 40mm, Green	TOC-UBGM15
Adult Buccal Universal, width 40mm, Orange	TOC-UBGM16

DID YOU KNOW?

There are national guidelines relating to clinical photography in Orthodontics? Scan the QR code and we'll take you there!

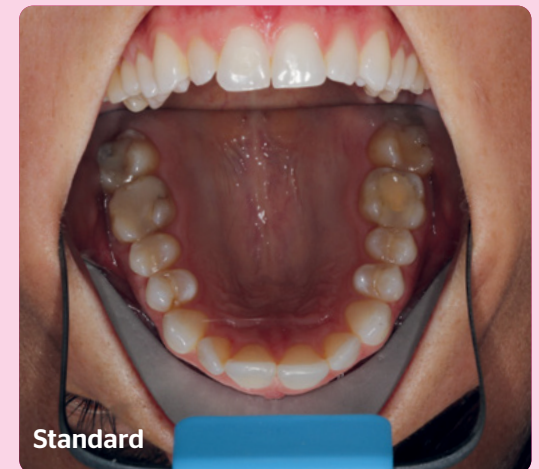


Why Ultrabright mirrors?

- Reflectivity close to 100%
- More detail for intra-oral images
- True colour representation
- High durability
- Best product quality

Ultrabright vs Standard Occlusal Mirrors

Tried and tested, these photos show the high quality image that can be achieved using this premium range mirror.

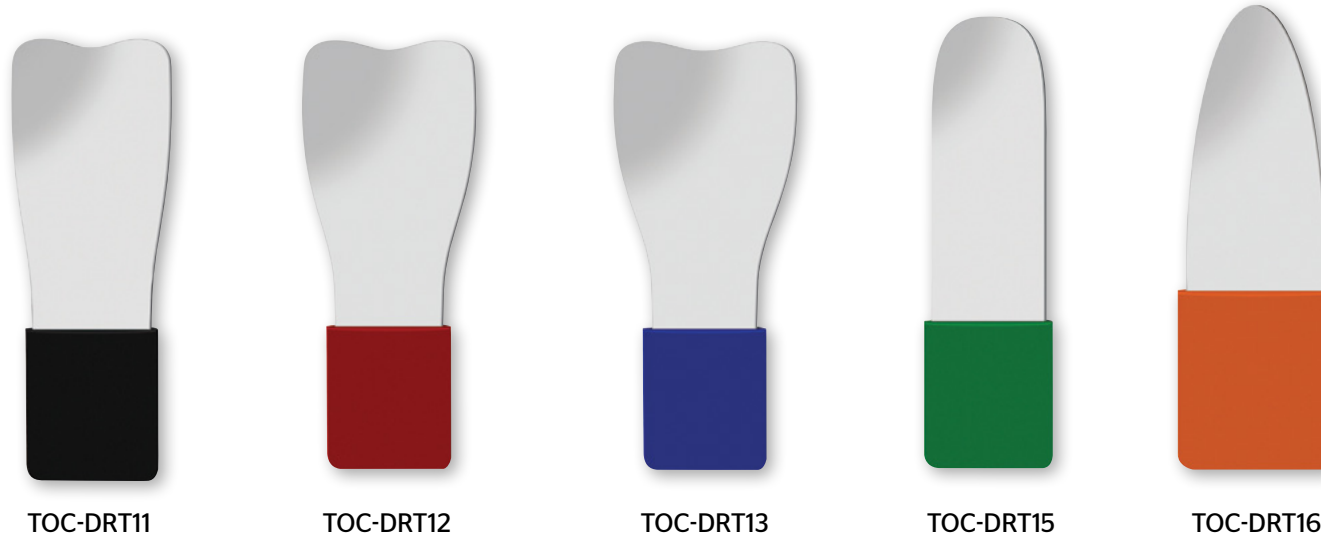


INTRA-ORAL MIRRORS

Clearbright Glass Mirrors

Double sided photo mirror with a clearbright coating which offers a more economical choice to the Ultrabright mirrors. Made of extremely smooth float glass they provide almost 80% reflection and 80% colour fidelity. The mirrors are 3mm thick, are corrosion resistant and have colour coded silicone handles which may be autoclaved with the mirror.

TOP TIP
Put me in warm water and wipe me down prior to taking photos to stop me steaming up!



Autoclavable up to 278°F/137°C

PRODUCT	CODE
Child Occlusal, width 55mm, Black	TOC-DRT11
Adult Occlusal, width 65mm, Red	TOC-DRT12
Adult Occlusal, width 70mm, Blue	TOC-DRT13
Adult Buccal, width 40mm, Green	TOC-DRT15
Adult Buccal Universal, width 40mm, Orange	TOC-DRT16

"The Clearbright mirror has a very useful handle, which makes it much easier to use whilst operating the camera simultaneously. The quality of the images is also really good, and I always ask my nurse to make sure this mirror is in my surgery!"

Dr Hesham Ali, Consultant Orthodontist

Mirror Blades

These stainless steel photo blades feature a highly polished surface giving a mirror effect. Their specific shape gives excellent results.

For occlusal photos use the large end and for lingual photos use the small end.



"Great quality, good value mirrors. The design makes taking photos much easier keeping fingers out of the shot and allowing more retraction producing a high standard image."

Dr Guy Deeming, Specialist Orthodontist

PRODUCT	CODE
Small - width 55mm	QN-100-55
Large - width 65mm	QN-100-65

RHODIUM MIRRORS

Rhodium is the key!

TruPix™ Mirrors are coated with Rhodium, one of the earth's rarest elements and the world's most expensive precious metal. TruPix™ Mirrors offer superior reflectivity compared to both stainless steel and chrome mirrors.

They are double sided for increased durability and have incredibly smooth edges for extra patient comfort. Fully autoclavable, TruPix™ makes for an excellent choice!



Scan for prices

TOP TIP

Purchase one of our sterilisation cassettes to keep your mirrors scratch free!



Buccal Narrow

Buccal Wide

Lingual Narrow

Lingual Wide



Palatal Adult

Palatal Child

Palatal Adult Long

Autoclavable up to 278°F/137°C

PRODUCT	SIZE	CODE
Buccal Narrow	41mm x 155mm x 56mm	QM-800-01
Buccal Wide	55mm x 175mm x 70mm	QM-800-02
Lingual Narrow	38mm x 150mm x 40mm	QM-800-03
Lingual Wide	42mm x 155mm x 40mm	QM-800-04
Palatal Adult	70mm x 100mm x 62mm	QM-800-05
Palatal Child	60mm x 84mm x 50mm	QM-800-06
Palatal Adult Long	70mm x 135mm x 62mm	QM-800-07

Photography Course

Our course will provide the background knowledge on clinical photography as well as deliver practical advice, tips and demonstrations on how to improve the quality of your orthodontic records and photos. We will also share insight on the national standards relating to photographic record keeping and talk through the intricacies of photographic equipment to understand how to attain the highest standard photos with every click.



PRESENTED BY

Meeral Makwana

Consultant & Specialist Orthodontist

Sheffield & Derby

BDS (Hons) MFDS RCS(Ed)

MSc (Dist) MClinDent FDSOrth RCS(Ed)

Meeral has won numerous prizes for her MOrth cases and research. She believes clinical photography has helped her develop a more profound understanding of how orthodontic treatment progresses and has integrated clinical photography skills into her daily practice throughout her career.

Meeral is passionate about sharing her knowledge with others. She presented at the Dentistry Shows in London and Birmingham last year, discussing the importance of clinical photography to achieve excellence in record keeping.

CONTRASTORS

Contrastors allow photos to be taken with a completely black background, eliminating those elements not required in the picture. It makes the image more presentable for patients, lectures and publications.

Our occlusal contrastors are flexible and made of malleable metal covered with PlastiMed. This is a medical grade, latex-free black silicone material that is hypoallergenic and suitable for intra-oral use. The contrastor's smooth black surface is opaque with optimised anti-reflection performance, producing a perfect black background for intra-oral photographs.

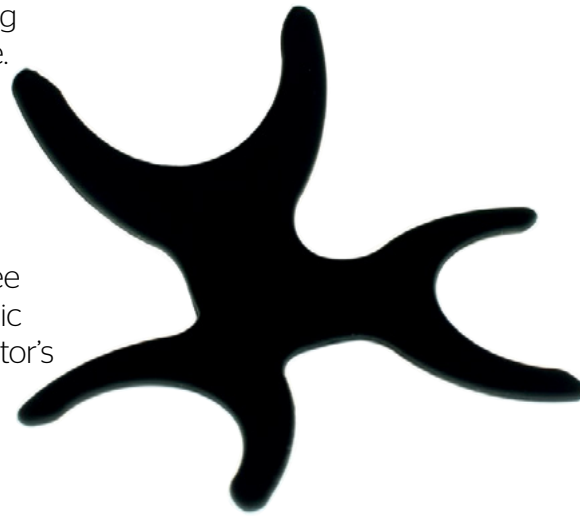
These 'C' shape contrastors have 3 sizes in one - large, medium, and small, for both upper and lower lip retraction according to each patient's requirements.

Visit our website for other available contrastors.



Autoclavable up to 275°F/135°C

PRODUCT	CODE
Occlusal Contrastor	QC-800-01

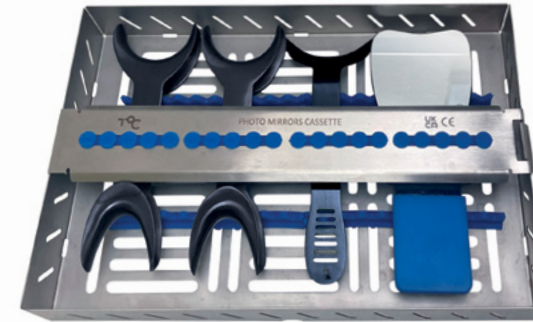


DID YOU KNOW?

I can retract the lip as well as providing a contrast between the teeth and soft tissues for an improved occlusal shot.



Mirror Sterilisation Cassettes



Large - Does not fit all standard autoclaves. Instruments not included.

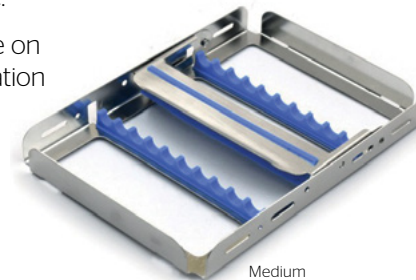
Increase the life of your photographic mirrors. These cassettes protect your photographic mirrors during any cleaning and sterilization process, helping avoid accidental damage.

The internal silicone strips put no pressure on the mirrors, which allow complete penetration by the washing and disinfection solutions.

PRODUCT	CODE
Small cassette	QS-100-01
Medium cassette	QS-100-02
Large Photography cassette 292 x 188 x 40mm	QS-100-03



Small



Medium

Silicone Handles

Made of a flexible stainless steel blade encased in silicone, these handles can be bent with your hands in any position for the perfect picture. Finger prints and smudges are avoided on the mirrors and the handle holds the mirrors firmly in place without any damage.



PRODUCT	CODE
Blue	QN-100-00

Mirrors not included

T: 0117 975 5533 / **E:** info@tocdental.com / **W:** tocdental.com   
TOC, Collins Street, Avonmouth, Bristol, BS11 9JJ, UK.

© TOC, May 2024. All rights reserved.

